



clerkenwell 21-23 design week may

the UK's leading design festival

EXHIBITIONS/DESIGN DESTINATIONS

PRICES

Supported by



ENTERPRISE GREECE
INVEST & TRADE



Content

01. Light	p. 3
02. Elements	p. 4
03. Detail	p. 5
04. Project	p. 6
05. Design Fields	p. 7
06. Platform	p. 8
07. Contract & Work	p. 9
08. Pop-Ups	p. 10
Costs with Enterprise Greece support	p. 13

CDW presents exhibitions hosted in unique venues, each with a different curatorial focus. Design Destinations highlight key festival hubs with international pavilion takeovers, brand activations and more.

01. Light

Held within the subterranean House of Detention, the former Victorian prison showcases an array of leading international lighting brands and spectacular stand-alone installations.

9,446 visitors in 2023

Light rate

£471 + VAT per m² - space only

Light rate for participants after Enterprise Greece support

£188 per m² - space only



02. Elements

Elements explores the essential components of every architectural project. Bringing together a leading selection of ironmongery, hardware, switch plates and architectural accessories, this exhibition is a go-to destination for designers looking to achieve the perfect finish.

7,228 visitors in 2023

Elements rate

£471 + VAT per m² - space only

£491 + VAT per m² - shell scheme

Elements rate for participants after Enterprise Greece support

£188 per m² - space only

£196 per m² - shell scheme





03. Detail

Staged within the majestic Priory Church, Norman Crypt and Cloister Garden at The Order of St John in the heart of Clerkenwell, Detail hosts brands and manufacturers that reflect the very best in craftsmanship and quality. Including bespoke furniture, collectables, surfaces and lighting, this show is an insight into the world of contemporary luxury interiors.

12,311 visitors in 2023

Detail rate

£491 + VAT per m² - shell scheme

Detail rate for participants after Enterprise Greece support

£196 per m² - shell scheme

04. Project

Set in the beautiful grounds of St James's Church, Project brings together a leading selection of contract furniture and surfaces brands from around the globe.

Launched in 2016, Project's first outing was so successful it has since been extended to cover three pavilions.

18,214 visitors in 2023

Project rate

£471 + VAT per m² - space only

£491 + VAT per m² - shell scheme

Project rate for participants after Enterprise Greece support

£188 per m² - space only

£196 per m² - shell scheme



05. Design Fields

Design Fields spotlights leading international furniture and product design. Set across two levels in a purpose-built pavilion in Spa Fields, the area also hosts the world-class talks programme 'Conversations at Clerkenwell' alongside street food, installations and brand activations.

11,664 visitors in 2023

Design Fields rate

£471 + VAT per m² - space only

£491 + VAT per m² - shell scheme

Design Fields rate for participants after Enterprise Greece support

£188 per m² - space only

£196 per m² - shell scheme



06. Platform

Platform is a hotbed of emerging talent. The venue gives space to designers and brands new to, or about to break into the industry.

Platform rate

£471 + VAT per m² - space only

£491 + VAT per m² - shell scheme

Platform rate for participants after Enterprise Greece support

£188 per m² - space only

£196 per m² - shell scheme



07. Contract & Work

New for 2024, Contract and Work showcases innovative and forward-thinking products for commercial and workplace interiors. This exhibition is located in Kingsway Place, next to the infamous House of Detention.

Contract & Work rate

£471 + VAT per m² - space only

£491 + VAT per m² - shell scheme

Contract & Work rate for participants after Enterprise Greece support

£188 per m² - space only

£196 per m² - shell scheme



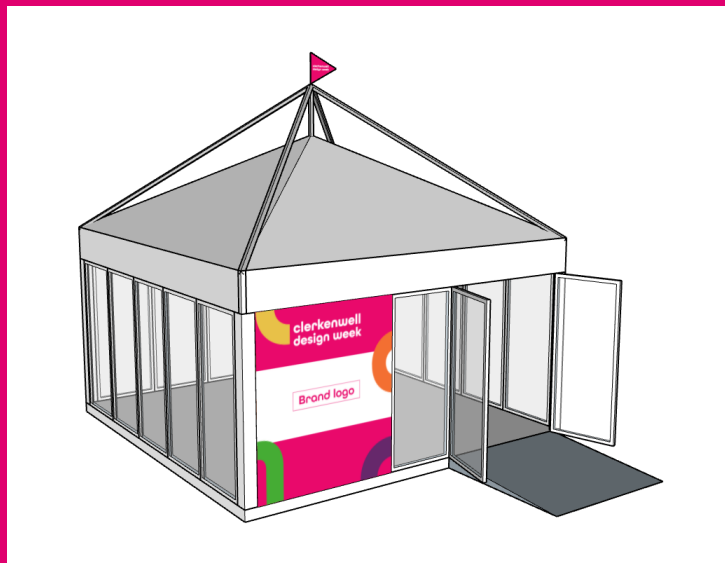
08. Pop Up Packages

SIZE	SQM	LOCATION	GRAPHIC SIZE	COST	Final cost of participation with Enterprise Greece support
4x4 m	16	Clerkenwell Green	1980x2350 mm	£12,400	£4,960
5x5 m	25	Clerkenwell Green	1980x2350 mm	£16,800	£6,720

ENTERPRISE GREECE
INVEST & TRADE

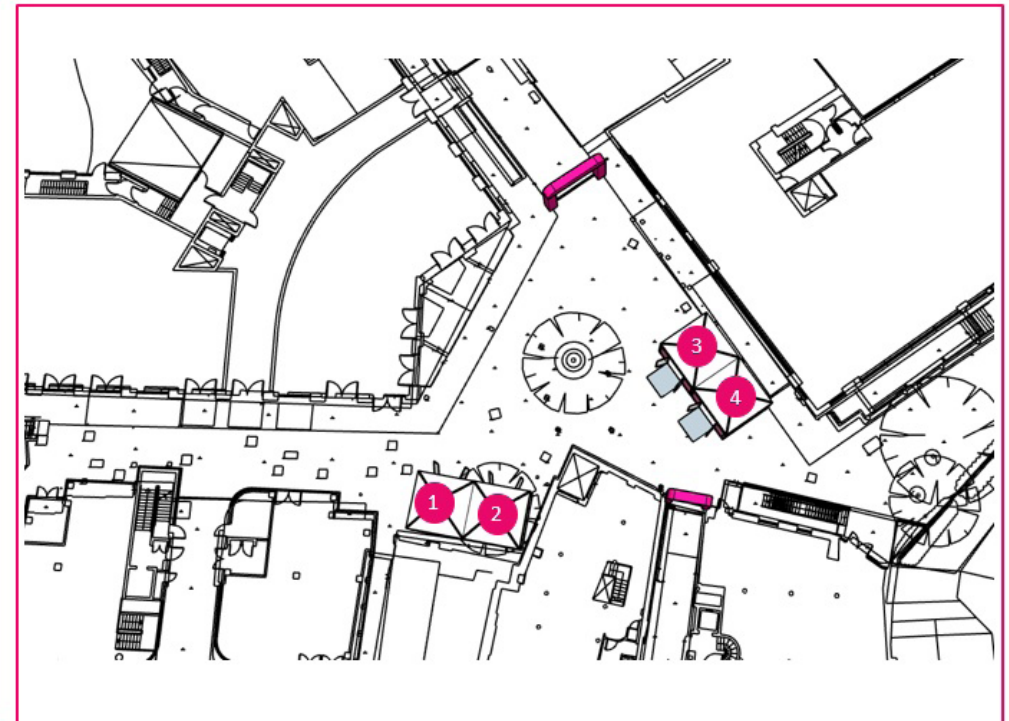
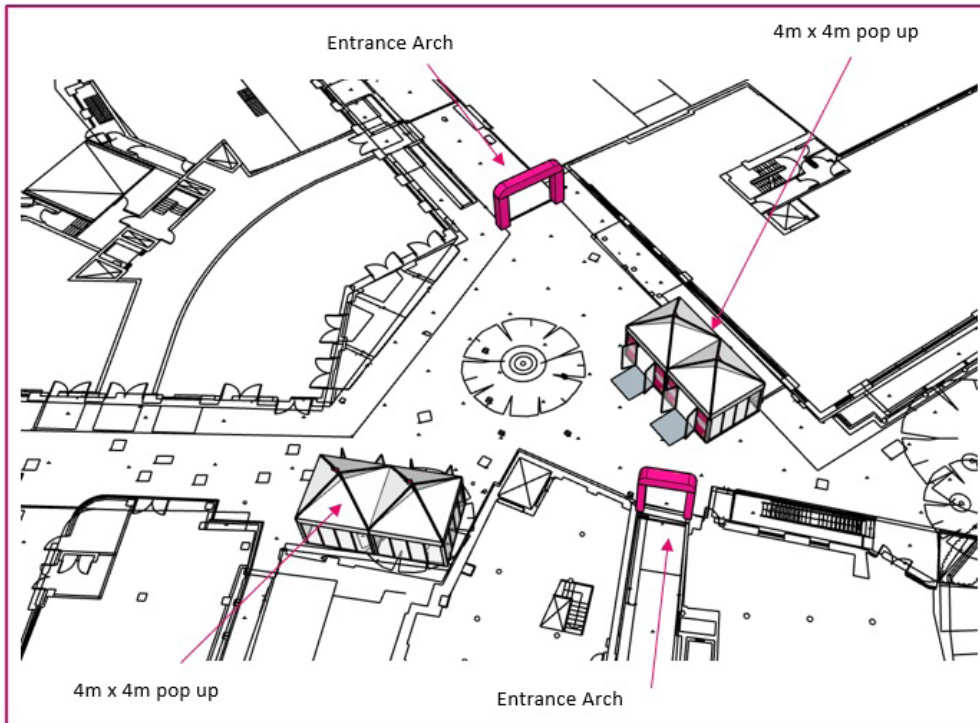
Included: Graphics, Carpet

Not Included: Electrics, Lighting



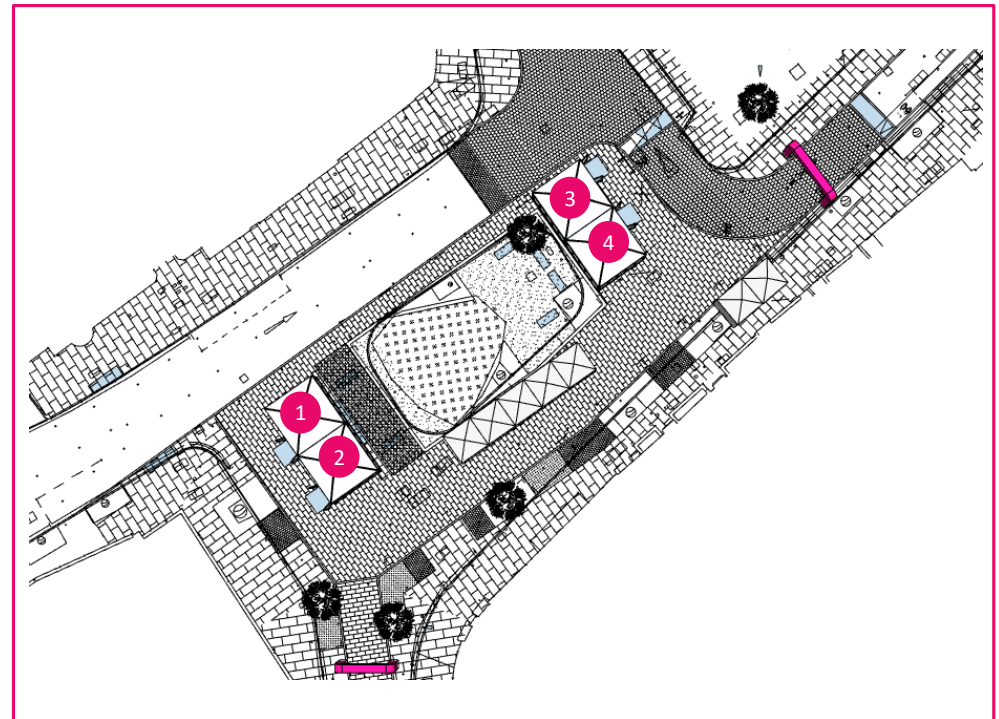
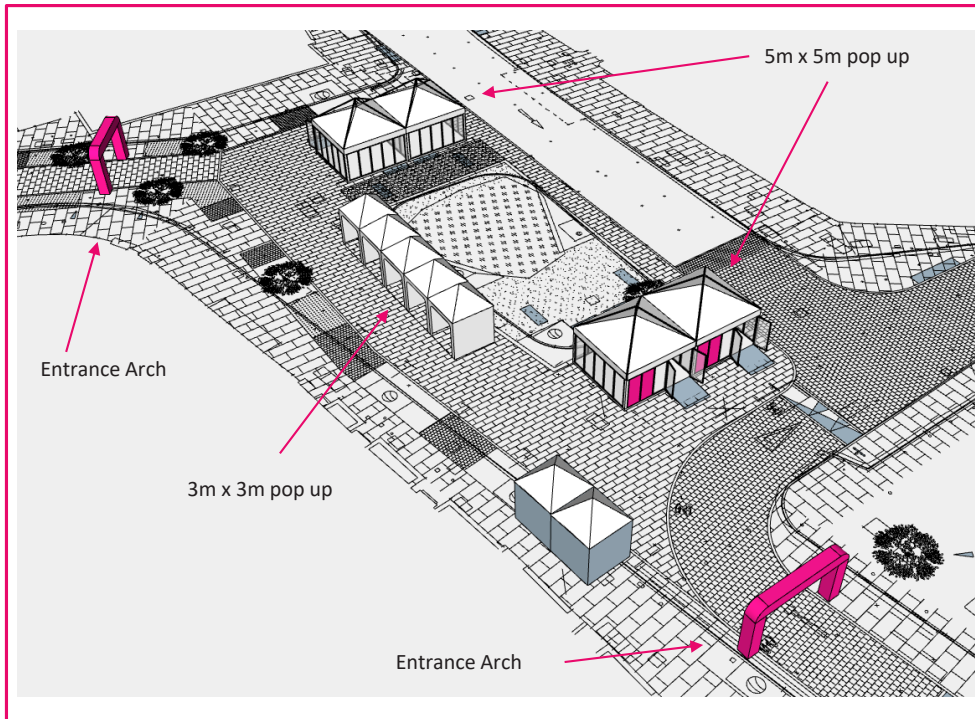
08. Pop Up Packages

- 4 x 4 m



08. Pop Up Packages

• 5 x 5 m



Costs with Enterprise Greece support

Design Destination	Participation Costs / sqm	Support amount by Enterprise Greece	Final cost for participating companies
LIGHT	£471	£283	£188
ELEMENTS	£491	£295	£196
DETAIL	£491	£295	£196
PROJECT	£491	£295	£196
DESIGN FIELDS	£491	£295	£196
PLATFORM	£491	£295	£196
CONTRACT & WORK	£491	£295	£196
POP UP 16 sqm	£12,400	£7,440	£4,960
POP UP 25 sqm	£16,800	£10,080	£6,720

Contact

Exhibition enquiries:

Daide Moretto

Divisional Sales Manager
davide.moretto@m10group.co.uk

Claire Banks

Account Manager
claire.banks@m10group.co.uk

Kieran Dean

Account Manager
kieran.dean@m10group.co.uk

Sponsorship enquiries:

Marlon Cera-Marle

Director
marlon.marle@m10group.co.uk

Marketing and PR enquiries:

Jedd Barry

Senior Marketing Manager
jedd.barry@m10group.co.uk