

19 - 22 November 2025  
Fiera Milano (Rho)

# EXHIBITION SECTORS

*FOR*  
WORK IN PROGRESS



co-located with:

## MIBA

MILAN INTERNATIONAL BUILDING ALLIANCE



## MADE expo

**MADE expo** is the specialised and integrated business platform where companies from the world of construction meet. Divided into **two main sectors, Construction and Building Envelope**, it provides exhibiting companies with the opportunity to meet new customers and strengthen relationships with designers, installers, distributors, exporters and builders. The Construction and Building Envelope sectors represent the future for innovation, sustainability, digitalisation, comfort and safety in buildings. **MADE expo is a work for progress.**

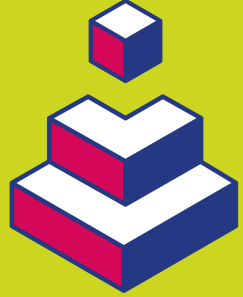
## WHY YOU SHOULD ATTEND AS AN EXHIBITOR

- ▶ **IT ANTICIPATES THE FUTURE**  
MADE expo is Italy's leading international event for the world of construction.
- ▶ **QUALITY CONTACTS**  
MADE is a focal point for high profile national and international visitors.
- ▶ **NEW TRENDS**  
MADE expo represents a careful and competent overview of how to stay updated in an ever changing world.
- ▶ **INFORMATION AND TRAINING**  
MADE expo is a central point for meetings, workshops and conferences: an educational, innovative, dynamic and experiential event.
- ▶ **SYNERGIES**  
SICUREZZA, SMART BUILDING EXPO and the GLOBAL ELEVATOR EXHIBITION will all take place at the same time as MADE expo: an opportunity not to be missed for those working in the design and construction world.



## TWO VERTICAL CONSTRUCTION

**From design to living comfort:** companies and planners, either engaged in new constructions or renewal interventions, find in the **Construction** sector **tools, products** and **solutions** to **design** and **build safe buildings** thanks to **innovative** and **performing construction systems**, thanks to **traditional and high-tech materials**, responding to tastes and lifestyles, thanks to **finishes** with high customization potential.



### PRODUCT AREAS

- ▮ Planning, BIM and Software - Services
- ▮ Structures and Building systems
- ▮ Civil engineering and Infrastructures
- ▮ Construction site tools and Safety
- ▮ Energy requalification, Insulation and Comfort
- ▮ Interior and exterior Finishes and Coatings
- ▮ Building/utilities integration

## BUILDING ENVELOPE

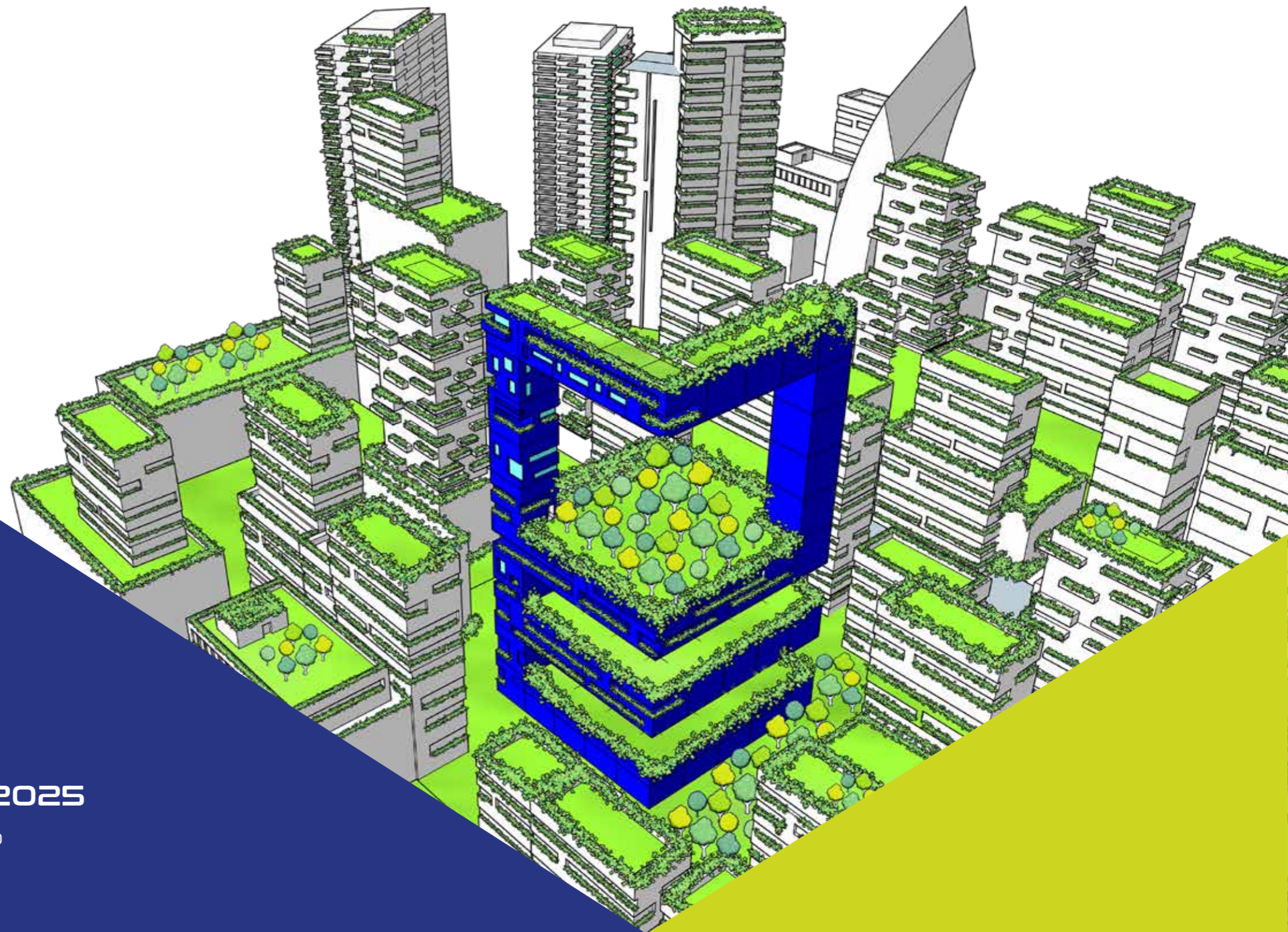
The building envelope is responsible for defining the performance of the buildings, their accessibility, their permeability to light. The **Building Envelope** sector, dedicated to the entire chain of **doors** and **windows** and the **technical components**, displays the most innovative solutions available for companies, planners and window makers to combine **energy requalification** and **comfort**. The communication between indoor and outdoor spaces finds new forms and living areas move outdoors with new proposals.



### PRODUCT AREAS

- ▮ Building envelope, Façades and Roofs
- ▮ Fenestration, Windows and Doors
- ▮ Glazing
- ▮ Components, Accessories and Hardware
- ▮ Closures, Sunshading and Automation
- ▮ Outdoor, Sunscreen and Anti-Insect screens
- ▮ Machinery and Production Equipment for windows





19\_22 Nov 2025  
fieramilano Rho

for info:

[segreteria@madeexpo.it](mailto:segreteria@madeexpo.it)

[madeexpo.it/en](http://madeexpo.it/en)

co-located with:

**MIBA**

MILAN INTERNATIONAL BUILDING ALLIANCE

