

The Charterhouse

Home to contemporary furniture, decorative lighting and luxury finishes.

Clerkenwell Design Week will activate the historic Charterhouse building and courtyard. The heritage site which dates back to medieval and Tudor times will provide a striking backdrop for cutting-edge furniture, lighting and luxury finishes. From Tudor halls to a monastery cloister and even a lawn-laid courtyard, brands can showcase the beauty of their products within the opulent surroundings of a grade 1 listed building.

- **The Charterhouse will host Conversations at Clerkenwell as well CDW's opening party**
- **Installations will be situated in and around The Charterhouse**
- **Charterhouse Square will feature leading outdoor living and hospitality brands**
- **40+ brands will showcase their products**
- **Part of CDW's South district**

📍 **The Charterhouse, Charterhouse Square, EC1M 6AN**

RATE:

Space only: **£515 per sqm**

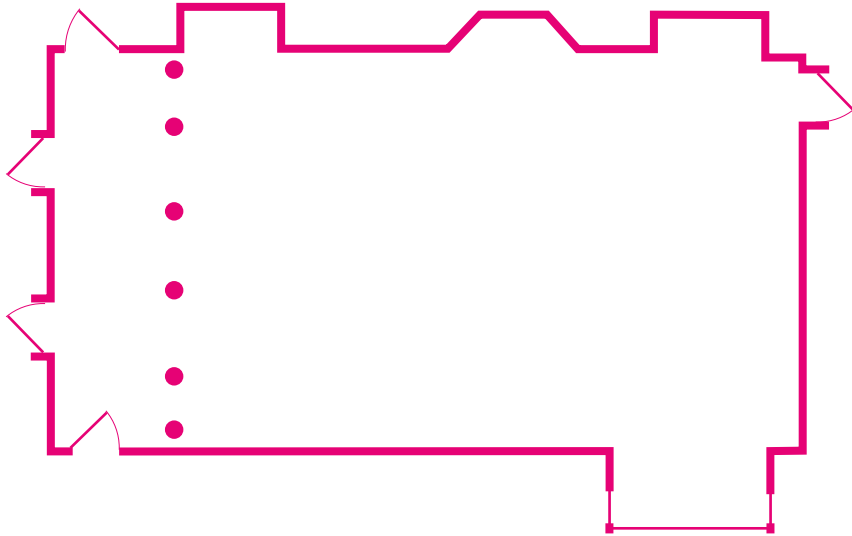
The Charterhouse will be a space only venue.

**new
for
2025**

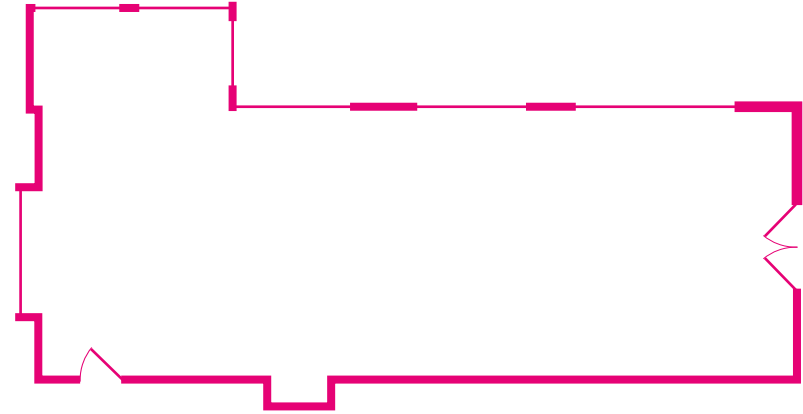


Floor plan

The Great Hall



The Great Chamber

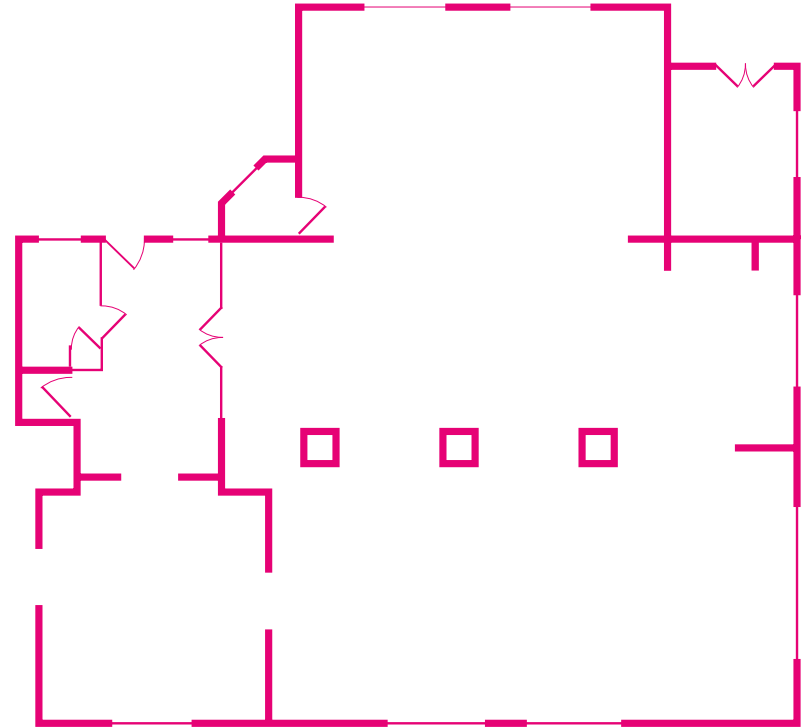


Floor plan

The Norfolk Cloister

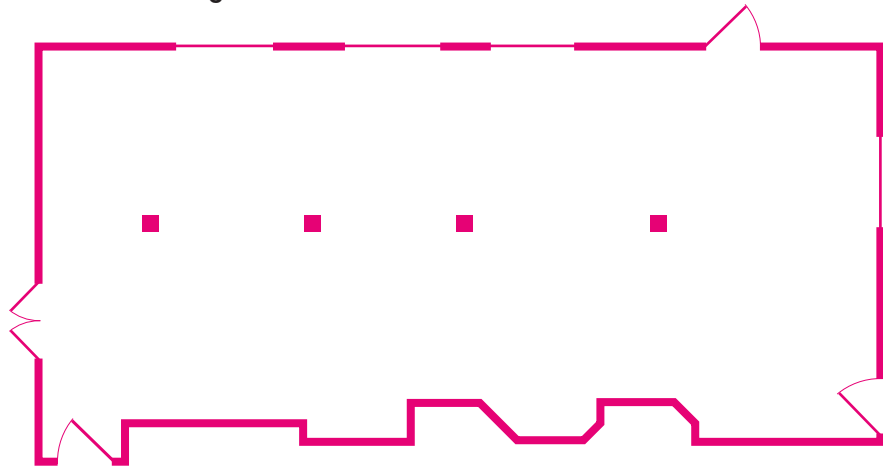


The Charterhouse Chapel

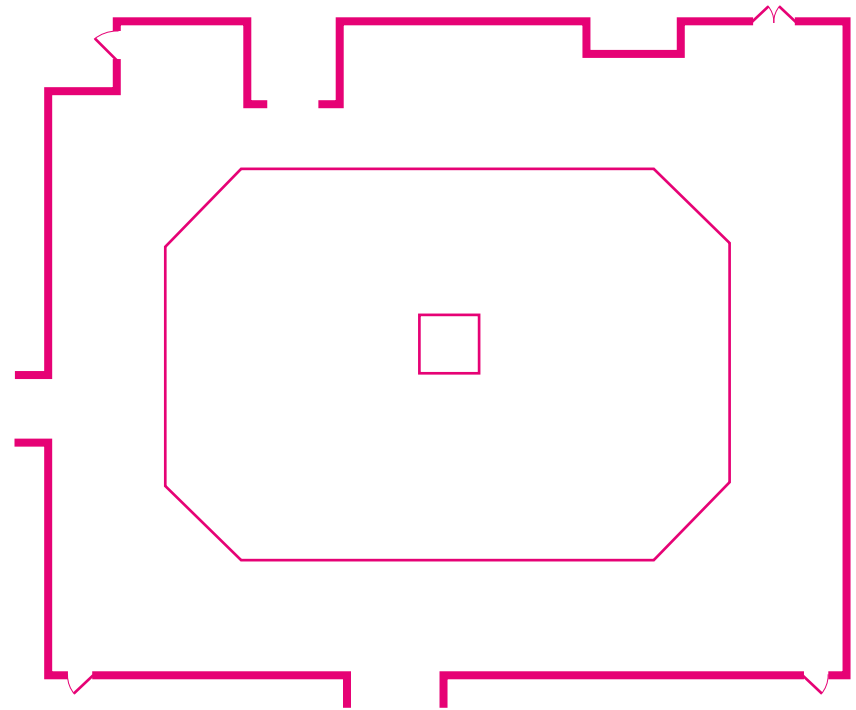


Floor plan

The Old Library



Master's Court



Festival map

Exhibition venues

- A** Design Fields
- B** Light
- C** Catapult
- D** Project
- E** British Collection
- F** Detail
- G** Elements
- H** Danish Collection
- I** 10-11 Clerkenwell Green
- J** Clerkenwell Green
- K** Contract & Work
- L** Old Sessions House
- M** Ceramics of Italy
- N** The Goldsmith's Centre
- O** **The Charterhouse**
- P** Cowcross Pavilions
- Q** Platform
- R** Charterhouse Square
- S** Church of Design
- T** Studio Smithfield

